

# Community Toolkit: Adding Food Waste to a Yard Trimmings Compost Facility

NYS Organics Summit Webinar | May 7, 2020



The Center for EcoTechnology  
helps people and businesses  
save energy and reduce waste.





# BioCycle CONNECT<sup>®</sup>

Your Free Weekly News Feed From  
THE ORGANICS RECYCLING AUTHORITY<sup>®</sup>

**SIGN UP TODAY!**

**BioCycleConnect.com**



# COMMUNITY TOOLKIT:

Adding Food Waste to a Yard Trimmings Compost Facility

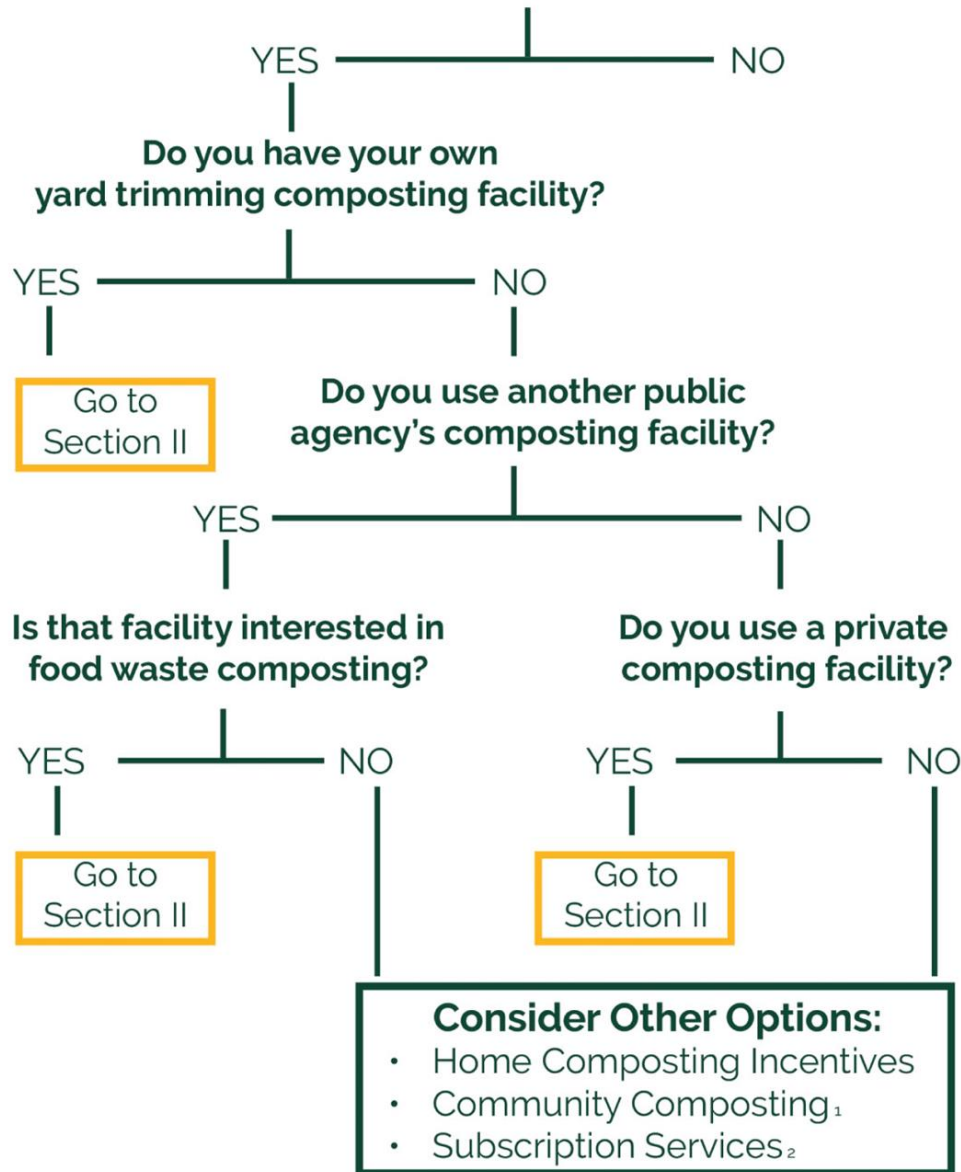
[wastedfood.cetonline.org/Community-Toolkit-Yard-Trimming-Food-Scraps](https://wastedfood.cetonline.org/Community-Toolkit-Yard-Trimming-Food-Scraps)



# Why Should We Compost Food Waste?



# Does Your Municipality Divert Yard Trimmings?



# Initial Assessment

## PRACTICE PHYSICAL SITE ASSESSMENT



### Time to Assess if Your Site is Food Waste Ready!

#### 1. Composting pad surface type?

☐ ☐ Compacted dirt pad

☐ ☐ Compacted gravel pad

☐ ☐ Low permeability pad, e.g., concrete, asphalt

☐ ☐ Other: \_\_\_\_\_

Minimum: Compacted gravel pad

Better: Low permeability pad, e.g., concrete, asphalt

#### 2. Can site accommodate incoming truckloads (packer, dump truck, trailer) of food waste?

☐ ☐ Yes    ☐ ☐ No

Minimum: Yes, if only getting pick-up truck loads or self-hauled loads from households and small businesses

Better: Yes, able to accommodate truckloads

#### 3. Does site have space for a dedicated food waste receiving area?

☐ ☐ Yes    ☐ ☐ No

Minimum: Able to create space as needed when receive loads of food waste

Better: Have a dedicated food waste receiving area

#### 4. Storm water and leachate management, retention ponds

☐ ☐ Collect and retain all storm water in pond

☐ ☐ Vegetated buffers and treatment areas, vegetated filter strips to treat storm water as it runs off site

☐ ☐ Sloped pad to capture leachate from active composting piles

☐ ☐ Other



# Best Practices to Compost Food Waste

- Site design
- Operational considerations
- Available carbon
- Food waste receiving & mixing
- Recipes
- Contaminant removal
- Good neighbor strategies





## FOOD WASTE COMPOSTING GROUND RULES

1. Always have carbonaceous material (e.g., wood chips, ground brush, mulch, screened overs) available to mix with incoming food waste.
2. Never let a fresh load of food waste sit on the pad once unloaded. Immediately mix in carbon amendment (roughly 3 parts carbon to 1-part food waste). If you can't mix the food waste with the amendment within the first hour after receipt, cover the food waste with a 3- to 4-inch layer of compost or a 6- to 8-inch layer of wood chips to deter birds and other vectors.
3. Incorporate mixed feedstocks into an active composting pile as soon as possible. Once all incoming loads are processed and in the windrow, consider putting a layer of wood chips or finished compost on the surface to suppress odors.
4. At the end of the day — or even twice a day — scrape down the surface of the food waste receiving area to eliminate any fresh food waste remnants.

# Types of Food Waste to be Composted



# Collection and Hauling Considerations

- Hauler Contract Best Management Practices
- Educational Workshops



[wastedfood.cetonline.org/hauler-contracting-guidance](https://wastedfood.cetonline.org/hauler-contracting-guidance)



# Cost & Economic Considerations





# Compost Markets



# Final Takeaways

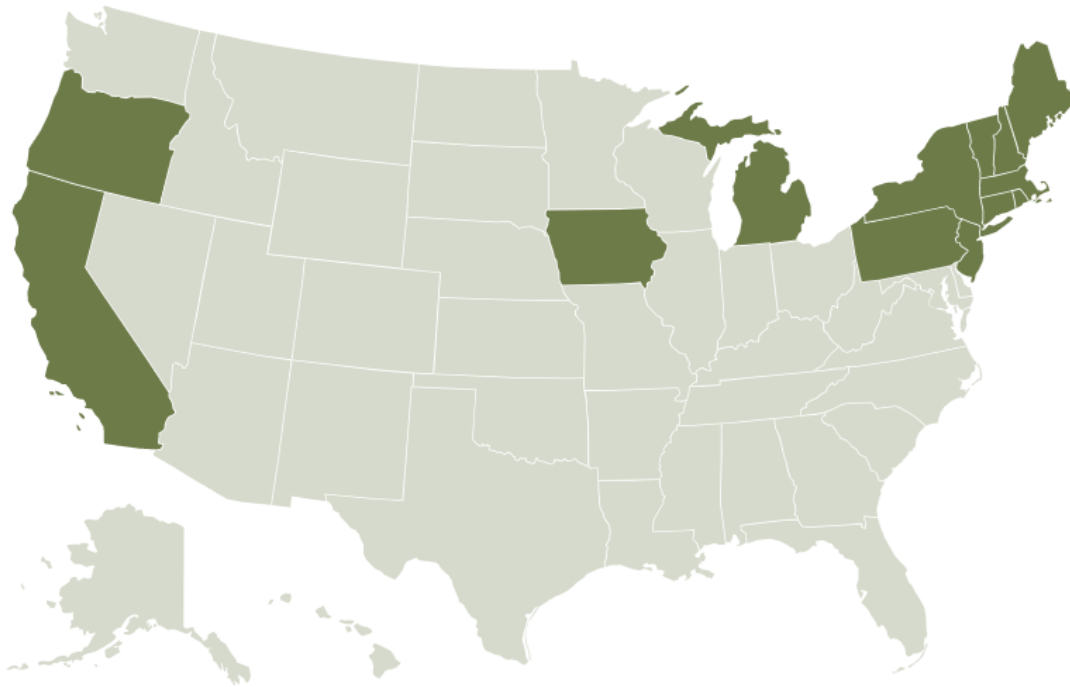




# WASTED FOOD SOLUTIONS

Do You Need Assistance With Wasted Food?

We can help! Select your state below to begin.



[wastedfood.cetonline.org](https://wastedfood.cetonline.org)

CALIFORNIA

CONNECTICUT

IOWA

MAINE

MASSACHUSETTS

MICHIGAN

NEW HAMPSHIRE

NEW JERSEY

NEW YORK

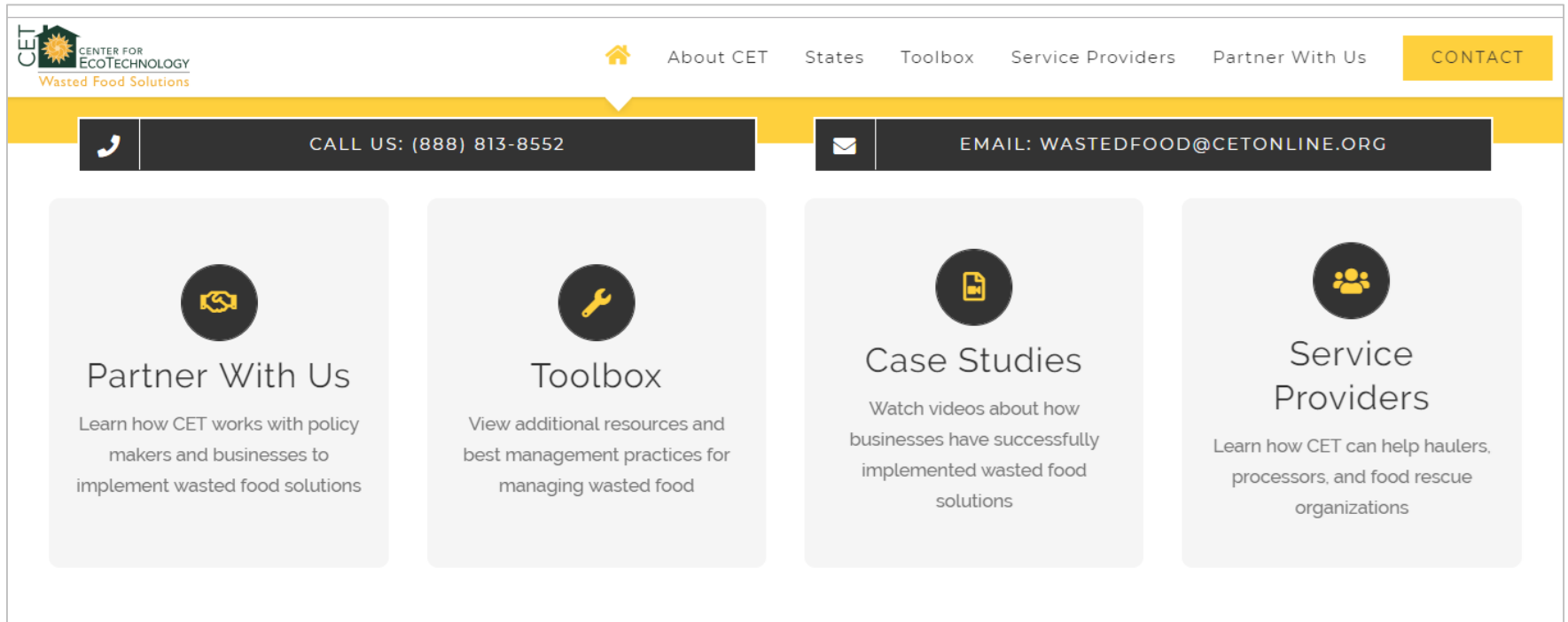
OREGON

PENNSYLVANIA

RHODE ISLAND

VERMONT

# WASTED FOOD SOLUTIONS TOOLBOX



[wastedfood.cetonline.org/toolbox](https://wastedfood.cetonline.org/toolbox)



# BioCycle CONNECT<sup>®</sup>

Your Free Weekly News Feed From  
THE ORGANICS RECYCLING AUTHORITY<sup>®</sup>

**SIGN UP TODAY!**

**BioCycleConnect.com**



# Questions?

Coryanne Mansell  
Strategic Services Representative  
Coryanne.Mansell@cetonline.org  
973-229-1704 (c)

[wastedfood.cetonline.org](http://wastedfood.cetonline.org)

Nora Goldstein  
Editor  
noragold@jgpress.com  
610-967-4135

[www.biocycle.net](http://www.biocycle.net)

